

San José State University
Department of Computer Engineering

CMPE 142

Operating Systems

Section 1

Spring 2021
Instructor: Ron Mak

Assignment #10

Assigned: Friday, April 30
Due: Friday, May 7 at 11:59 PM
Individual assignment, 100 points

Install a VMM and a Linux distro

In this assignment, each of you will install a free virtual machine manager (VMM) and then a Linux distribution (distro). This will give you experience installing and configuring the Linux operating system. Having a VMM installed on your machine will enable you to install and run other operating systems in the future.

Teamwork to install the VMM and Linux distro

Work together with your teammates to install a VMM, either VirtualBox or VMware Workstation Player, on each of your machines. Then each of you should choose a different Linux distro, and you can work together to install the chosen distro from its `.iso` file into the VMM on each machine.

- **VirtualBox** (runs on Windows, Mac, and Linux): <https://www.virtualbox.org>
- **VMware Workstation Player** (runs on Windows and Linux): <https://www.vmware.com/in/products/workstation-player/workstation-player-evaluation.html>
- **Linux distros:** Google “Linux distros”

Run the Linux distro

On each machine, run the chosen Linux distro and make a screenshot that clearly shows the distro running in a window of the host OS (Mac or Windows) under the control of the VMM. See the example screenshots.

Tips

Do not give the guest operating system (the Linux distro) more than half of your physical machine's cores or main memory. Doing so will cause serious performance problems.

The default virtual disk size is small – often only 10 GB. You might want to give it more, say 32 or 64 GB. After the distro has been installed, it won't be easy to change the disk size.

During the installation of the Linux distro, the installer will prompt you to answer many questions (username, password, etc.). You may be asked if you want to allow the installer to completely erase your disk. The installer is referring to the virtual disk, not your physical disk. Answer "yes".

What to submit

Each student submits one screenshot to Canvas, **Assignment #10: Install a VMM and a Linux Distro**.

Rubric

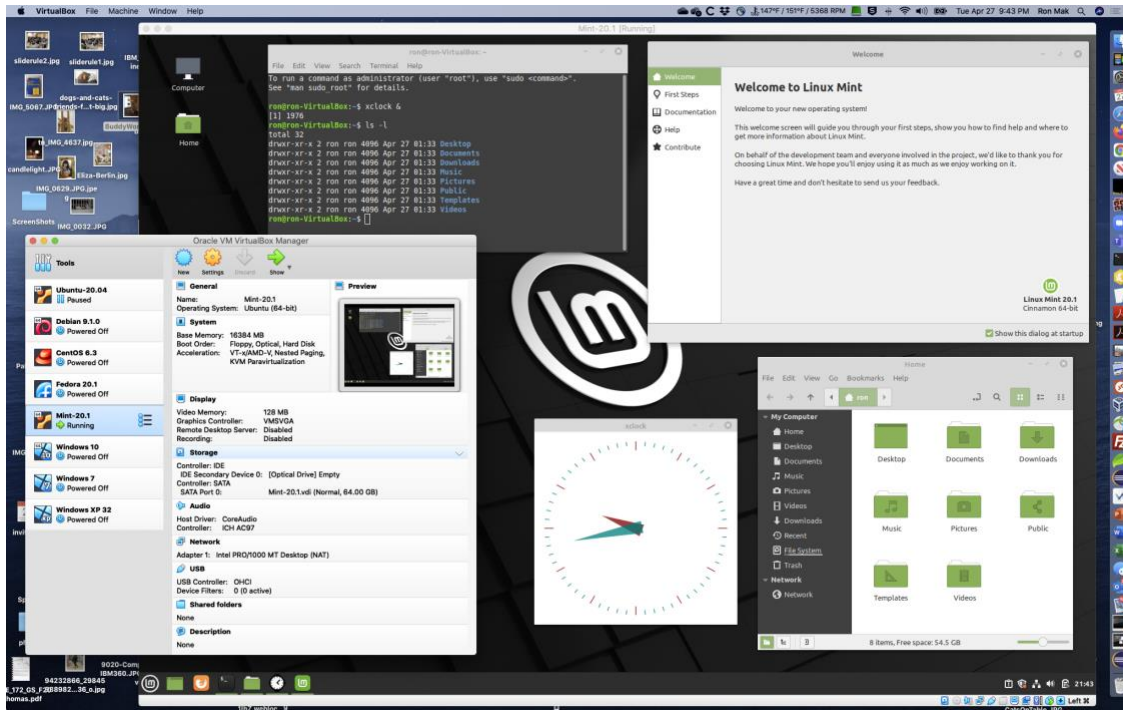
Each student's submission will be graded individually according to these criteria:

Criteria	Max points
Screenshot that shows the: <ul style="list-style-type: none">• VMM control panel (VirtualBox or VMware Workstation Player).• Linux distro running in a window of the host OS (Mac or Windows).	100 <ul style="list-style-type: none">• 25• 75

Example screenshots

Each student only needs to create one screenshot.

Linux Mint running under VirtualBox on Mac OS:



Ubuntu running under VMware Workstation Player on Windows 10:

