

# CS 144

# Advanced C++ Programming

Spring 2019

Instructor: Ron Mak

## Assignment #8

**Assigned:** Tuesday, March 26

**Due:** Tuesday, April 9 at 8:30 AM

**Canvas:** Assignment 8. Install wxWidgets

**Points:** 100

### Install wxWidgets

For Assignment #9, you will write a GUI-based program in C++. Therefore, for this Assignment #8, you will download, configure, and install the cross-platform **wxWidgets** package for developing programs with graphical user interfaces.

You will also install the **VirtualBox** virtual machine manager, and then the **Ubuntu** variant of the Linux operating system in a virtual machine managed by VirtualBox. Your host machine operating system can be either Windows 10 or MacOS X. Then you will install wxWidgets on top of Ubuntu.

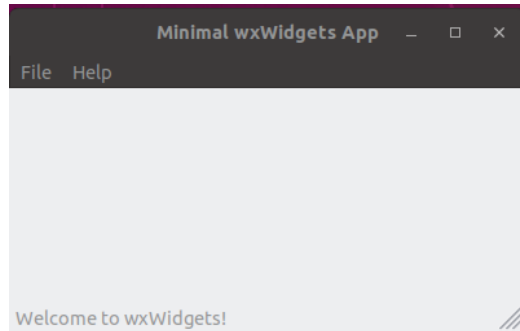
- VirtualBox: <https://www.virtualbox.org/>
- Ubuntu: <https://www.ubuntu.com/download/desktop>
- wxWidgets: <https://www.wxwidgets.org/>

Note: Windows 10 has a new option to install Linux as a subsystem. That won't work for this assignment because the subsystem is only text-based.

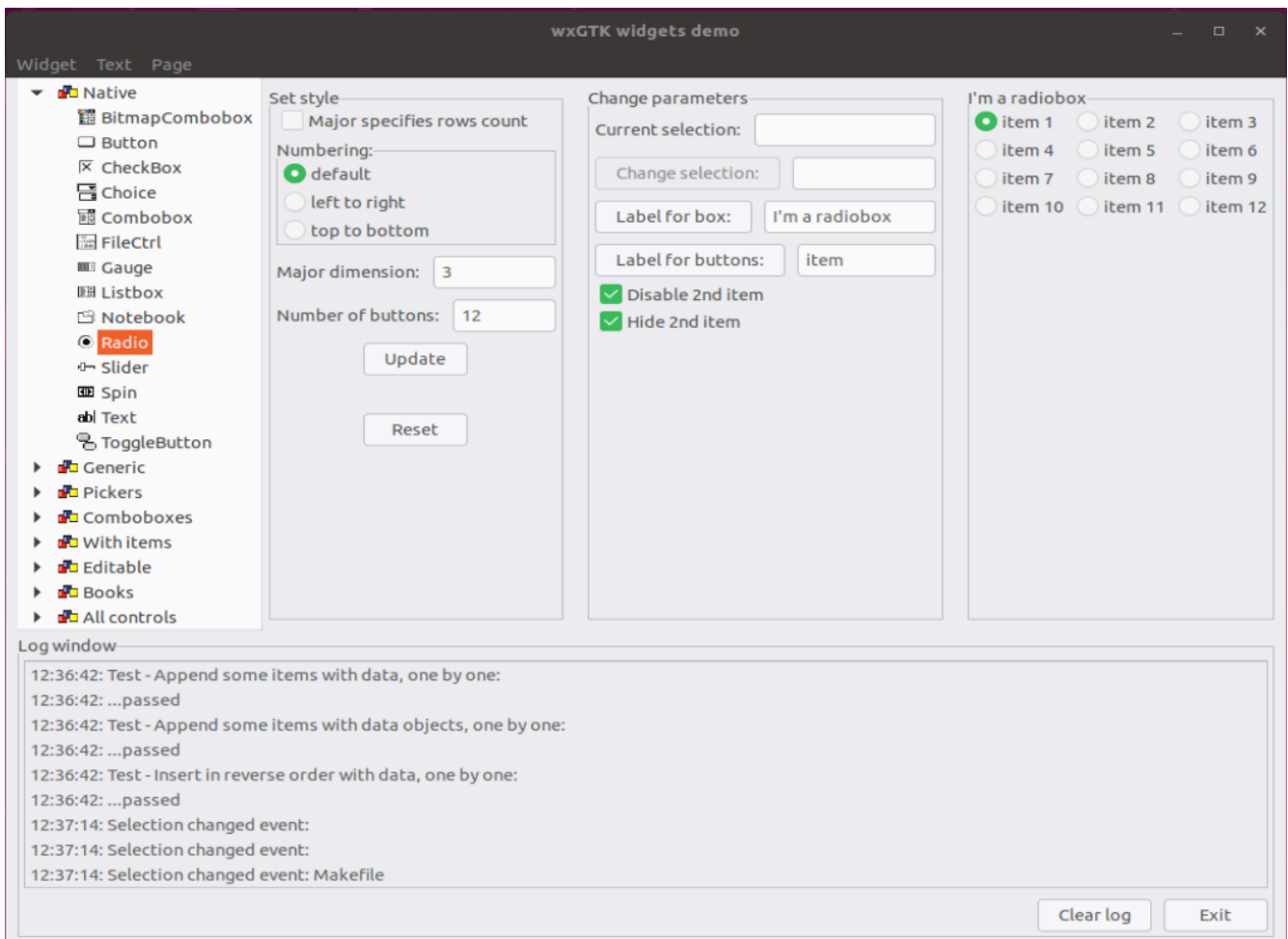
If you already have Ubuntu on your computer (such as via dual booting), then you don't need to install VirtualBox.

## Sample wxWidgets programs

After you've installed wxWidgets, build all the sample and demo programs. Make sure you can run the **minimal** sample program. Make a screen shot:



Then run the **widgets** sample program which includes all the widget controls. Make a screen shot, for example:



## Tutorials

See <http://www.cs.sjsu.edu/~mak/tutorials/index.html>. The pertinent ones are

- [InstallVirtualBox.pdf](#)  
Install the VirtualBox virtual machine manager on a Windows 10 platform, which will allow us to run the Ubuntu operating system in a virtual machine.
- [InstallUbuntu.pdf](#)  
Install Ubuntu 18.10 in a virtual machine managed by VirtualBox. Ubuntu is a popular variant of the Linux operating system.
- [InstallwxWidgets.pdf](#)  
Install the wxWidgets on the Ubuntu platform to allow us to build and deploy interactive GUI applications. Ubuntu can be running directly on physical hardware or in a virtual machine.

## Rubric

Your program will be graded according to these criteria:

Criteria	Max points
Screen shot of sample program <b>minimal</b> running on Ubuntu.	50
Screen shot of sample program <b>widgets</b> running on Ubuntu.	50