



Spartan Compass

Team Pear



What Does This Application Do?

- Provides a solution to pool together useful resources into an integrated application.
- Key Features
 - Simpler and smoother course catalog
 - Homework management and calendar organization
 - Professor information
 - User profile and accounts

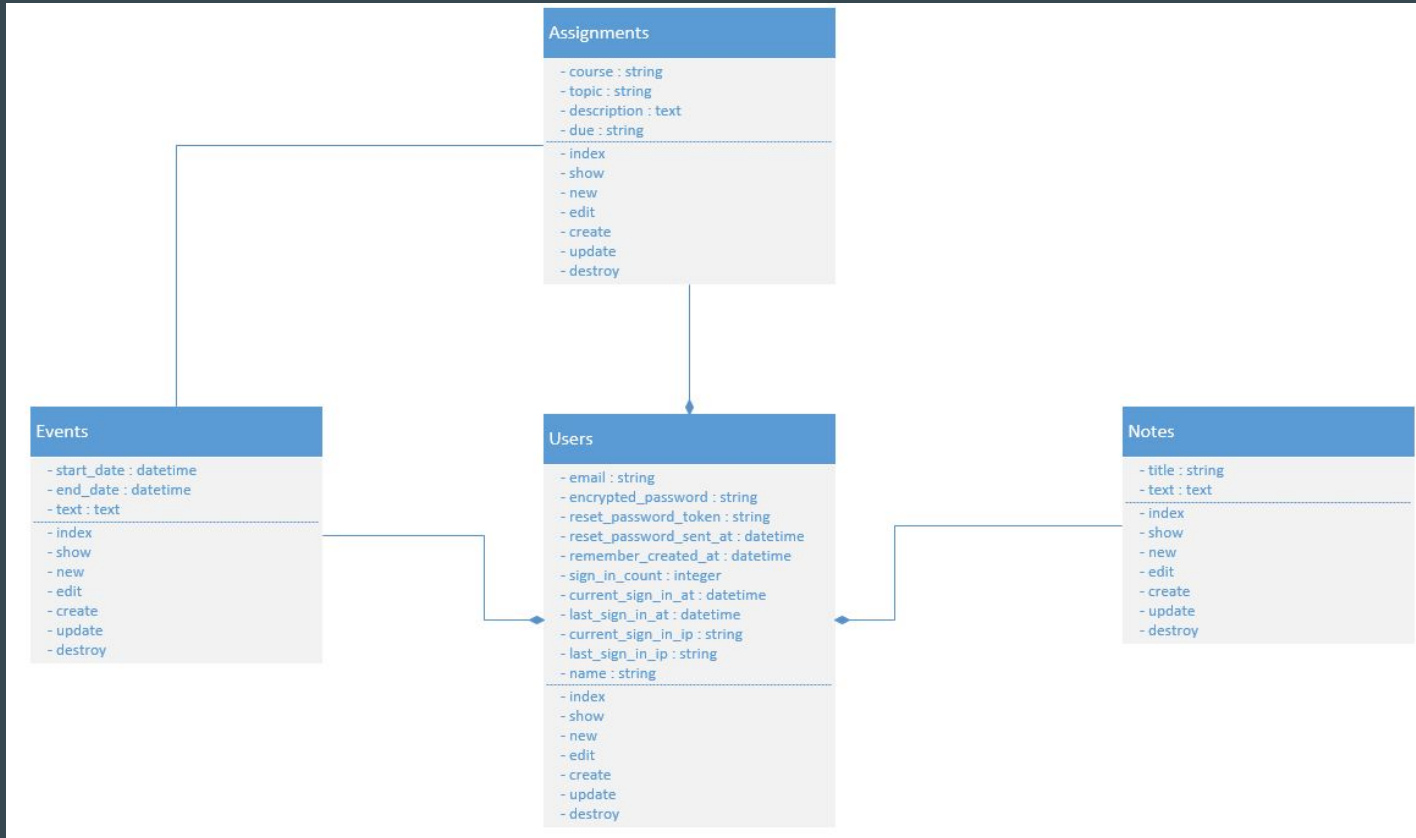


Who Is This Application For?

SJSU Computer Engineering students



UML Diagram



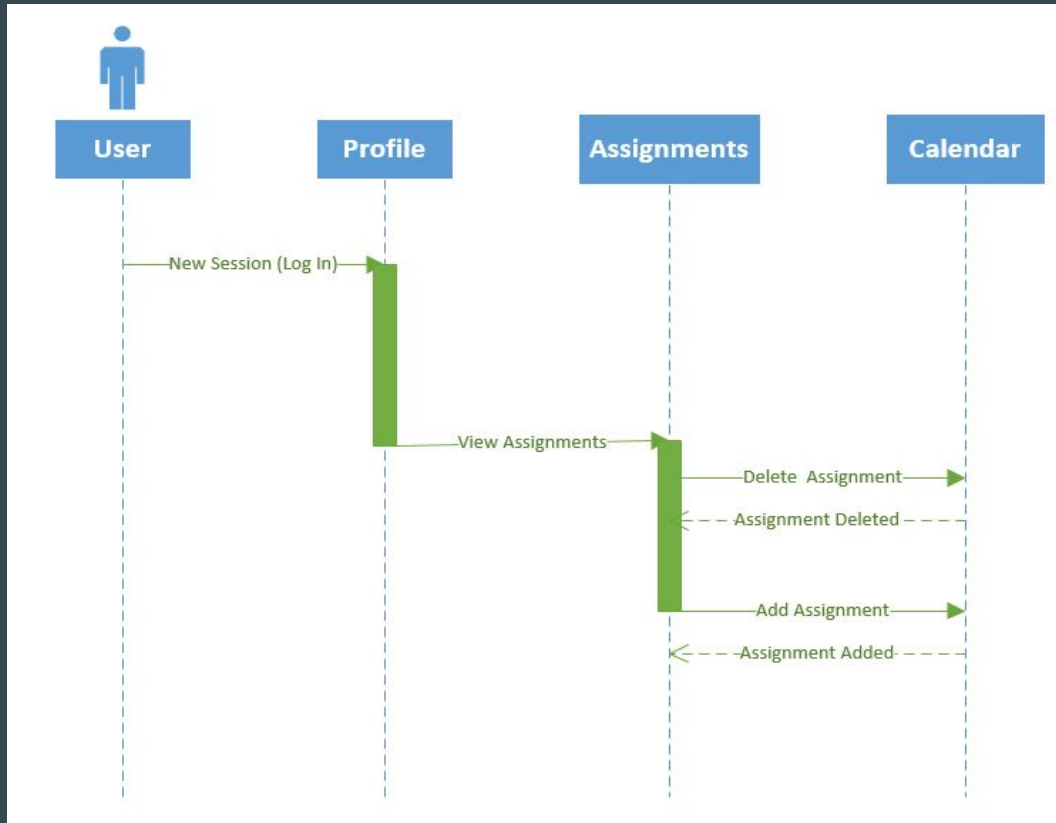
UML Diagram

Professors

```
- fname : string
- lname : string
- difficulty : float
- quality : string
- comment : text
- comment_type : string
- url : string
- days : string
- times : string
- room : string
- phone_number : string
- email : string
-----
- scrape()
- index
- show
- new
- edit
- create
- update
- destroy
```



UML Sequence Diagram



Assignments

- Created by the user.
- Due dates help the user stay organized.
- Calendar and List views.
- Includes homework, midterms, projects, labs, etc.

Assignments

- course : string
- topic : string
- description : text
- due : string

- index
- show
- new
- edit
- create
- update
- destroy



Events

- Created by the user.
- Start and End times allow for best display in Calendar view.
- Can be meetings, interviews, workshops, hobbies.

Events

```
- start_date : datetime  
- end_date : datetime  
- text : text
```

```
- index  
- show  
- new  
- edit  
- create  
- update  
- destroy
```



Professors

- Information pulled from the web.
- Updated once daily.
- Provides users with data to make an informed decision.
- Data includes, difficulty, quality, names, etc.

Professors

```
- fname : string
- lname : string
- difficulty : float
- quality : string
- comment : text
- comment_type : string
- url : string
- days : string
- times : string
- room : string
- phone_number : string
- email : string
```

```
- scrape()
- index
- show
- new
- edit
- create
- update
- destroy
```



Users

- The target audience for our application: SJSU computer engineering students.
- Enter through Log-in or Sign-up process.
- User profiles for settings.

Users

```
- email : string
- encrypted_password : string
- reset_password_token : string
- reset_password_sent_at : datetime
- remember_created_at : datetime
- sign_in_count : integer
- current_sign_in_at : datetime
- last_sign_in_at : datetime
- current_sign_in_ip : string
- last_sign_in_ip : string
- name : string
```

```
- index
- show
- new
- edit
- create
- update
- destroy
```



MVC Architecture

Model Objects

- Users
- Notes
- Assignments
- Events
- Professors

View Objects

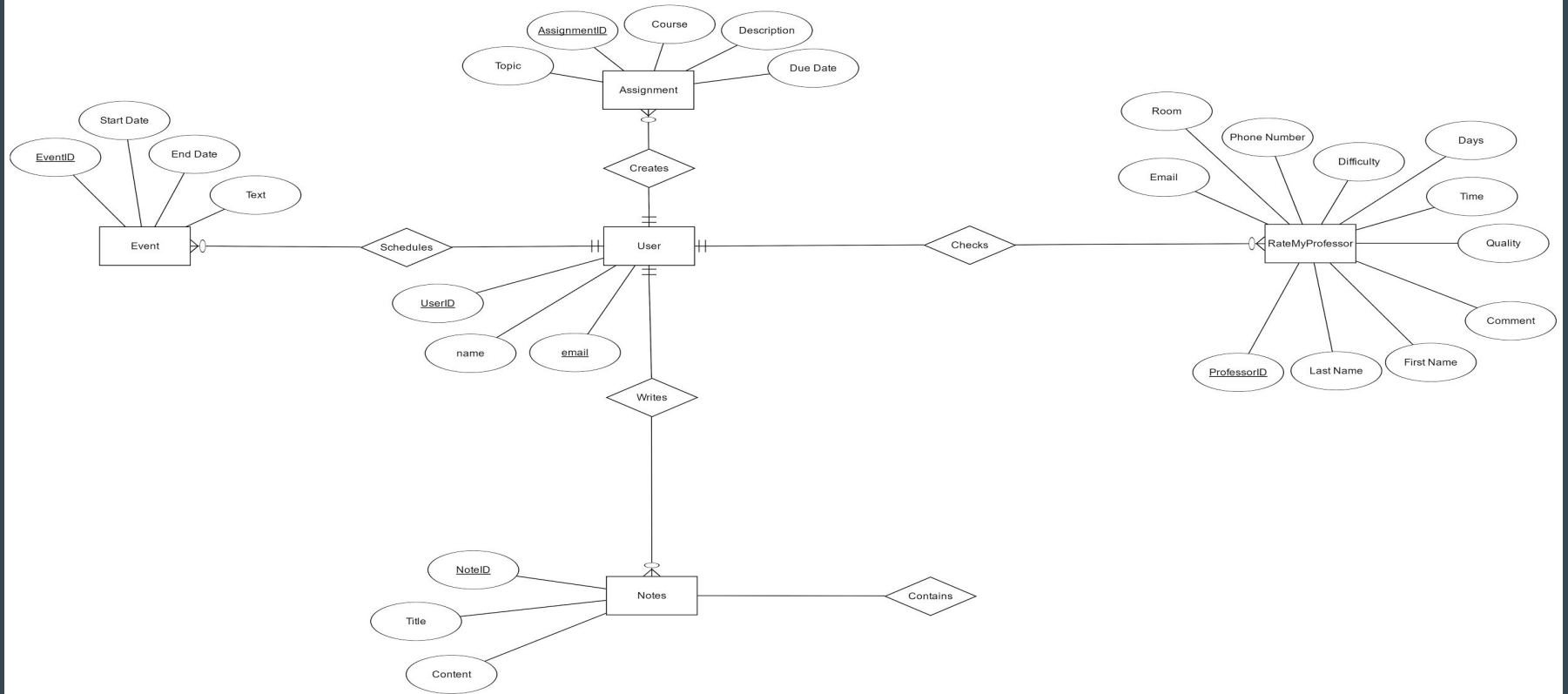
- General website display
- Basic Functions such as:
(Assignments, Professor
Information, Calendar,
Notes, etc.)
- Pictures and texts

Controller Objects

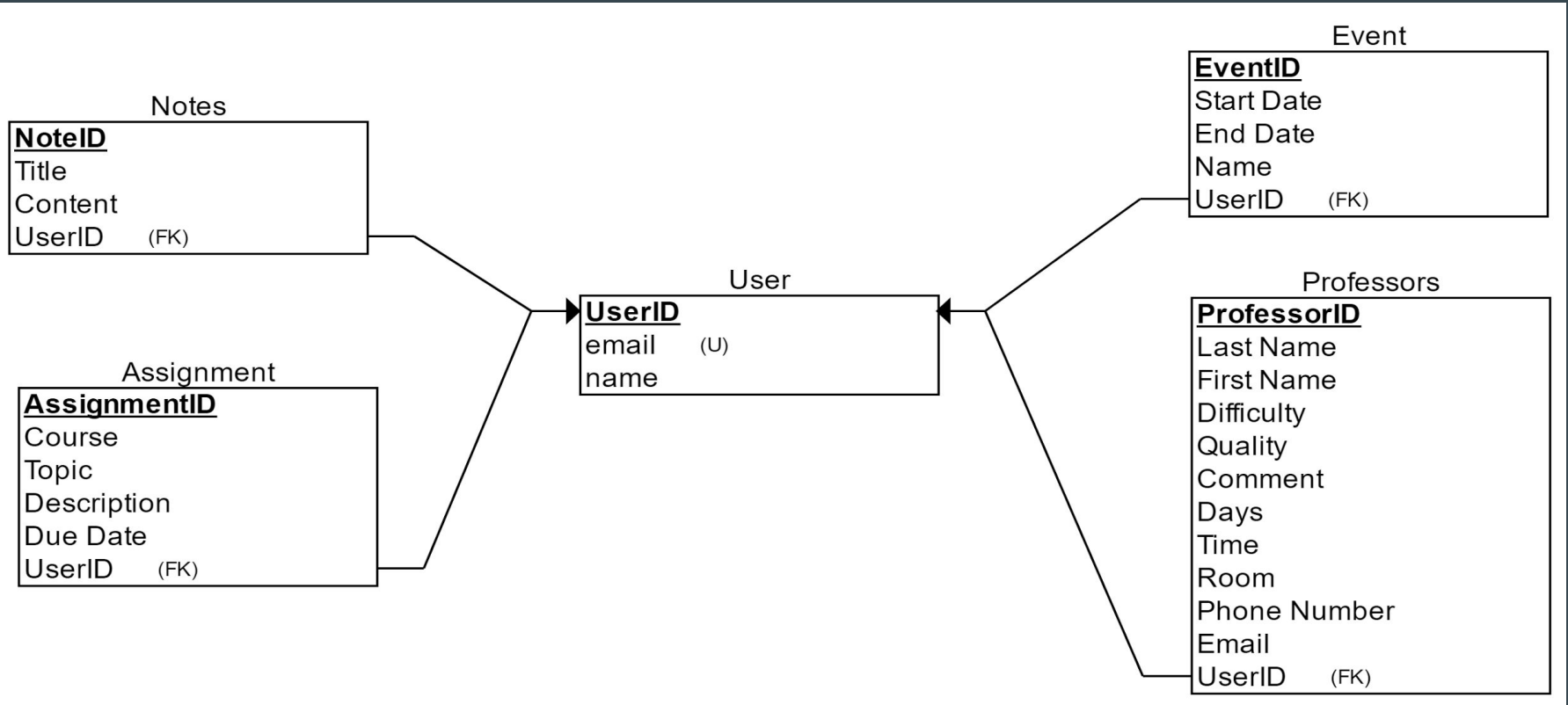
- User verification for
logging in
- Establish events on
calendar
- Create assignments in
a list form
- Publish Notes



ER Diagram



Relational Schema Diagram



Demo



Questions / Suggestions?

