

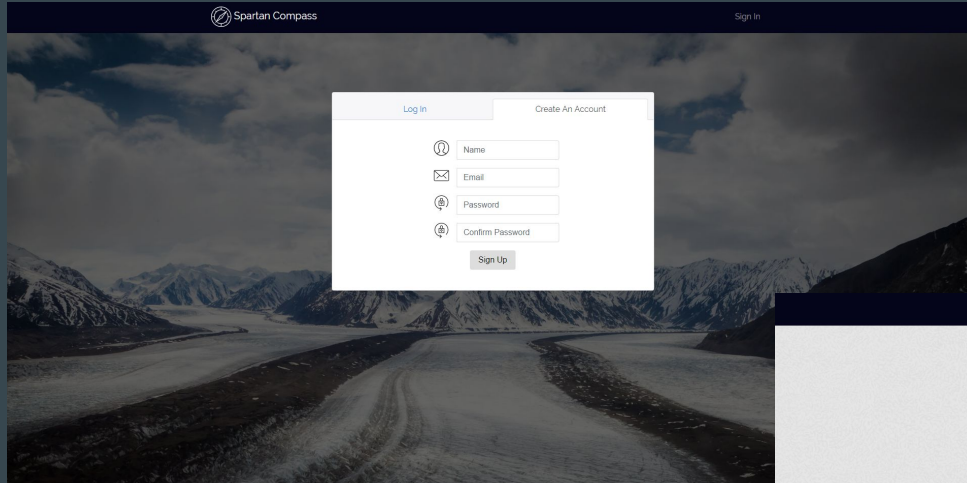


...

Spartan Compass

Team Pear

What Does This Application Do?



The image shows the login and sign-up interface of the Spartan Compass application. The background is a dark, scenic image of a mountain range. The interface is centered and features a white box with a light blue header. The header has two tabs: 'Log In' (selected) and 'Create An Account'. Below the tabs are four input fields: 'Name', 'Email', 'Password', and 'Confirm Password'. Each field has a small icon to its left: a person for Name, an envelope for Email, a key for Password, and a key for Confirm Password. A 'Sign Up' button is located at the bottom of the form.

Spartan Compass Sign In

Log In Create An Account

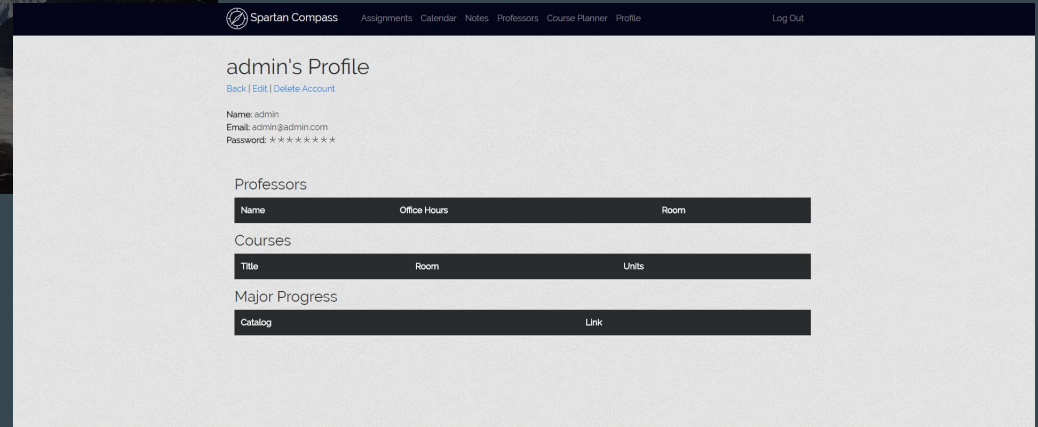
Name

Email

Password

Confirm Password

Sign Up



The image shows the user profile and navigation interface of the Spartan Compass application. The background is a dark, scenic image of a mountain range. The interface is centered and features a white box with a light blue header. The header has the Spartan Compass logo and navigation links: 'Assignments', 'Calendar', 'Notes', 'Professors', 'Course Planner', 'Profile', and 'Log Out'. The main content area is titled 'admin's Profile' and includes a 'Back | Edit | Delete Account' link. Below the title, the user's name, email, and password are displayed. The password is masked with asterisks. Below the user information, there are three sections: 'Professors', 'Courses', and 'Major Progress'. Each section has a table with columns for the respective data.

Spartan Compass Assignments Calendar Notes Professors Course Planner Profile Log Out

admin's Profile

[Back](#) | [Edit](#) | [Delete Account](#)

Name: admin
Email: admin@admin.com
Password: ****

Professors

Name	Office Hours	Room
------	--------------	------

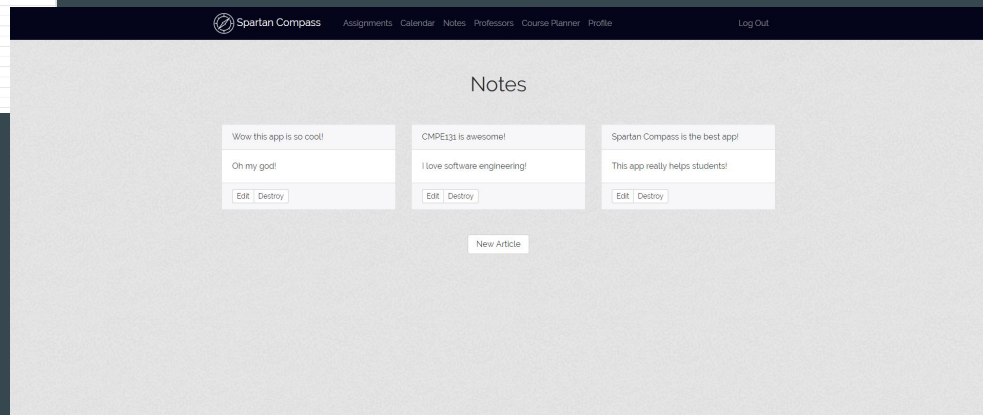
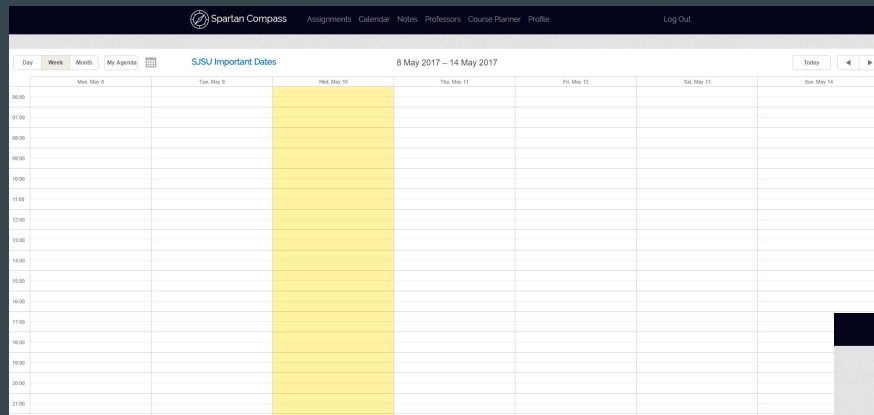
Courses

Title	Room	Units
-------	------	-------

Major Progress

Catalog	Link
---------	------






What Does This Application Do?



What Does This Application Do?

Spartan Compass [Assignments](#) [Calendar](#) [Notes](#) [Professors](#) [Course Planner](#) [Profile](#) [Log Out](#)

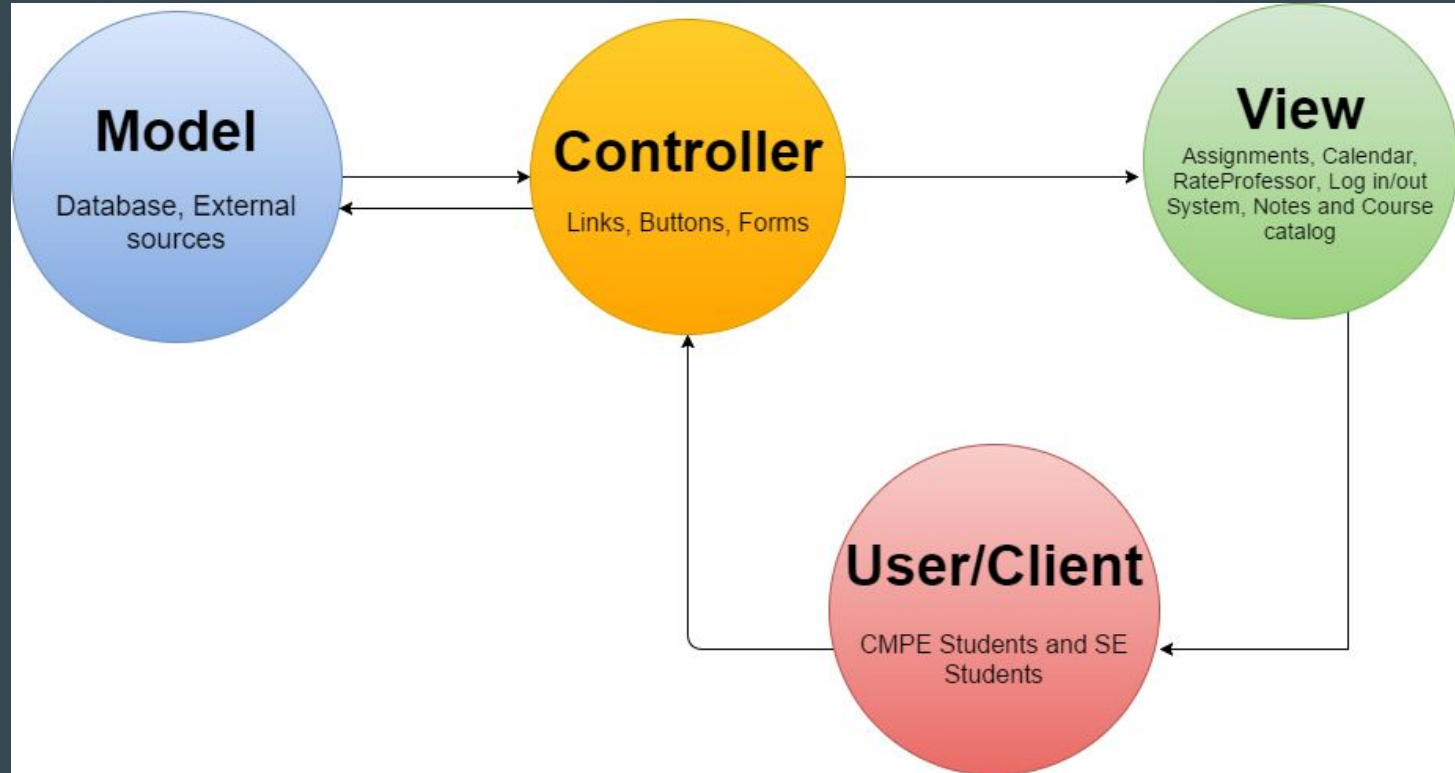
San Jose State University Computer Engineering Department

Profile	Office	Comments	Profile	Office	Comments	Profile	Office	Comments	Profile	Office	Comments	Profile	Office	Comments
														
Ahmed Hambaba Difficulty: 15 Quality: 4.0	Ahmer Bhatly Difficulty: 5.0 Quality: 1.0		Ahmet Bindal Difficulty: 3.8 Quality: 3.4	Akaterini Potika Difficulty: 2.3 Quality: 4.2		Andrew Bond Difficulty: 1.4 Quality: 5.0								
<input type="button" value="RateMyProfessor"/>	<input type="button" value="RateMyProfessor"/>		<input type="button" value="RateMyProfessor"/>	<input type="button" value="RateMyProfessor"/>		<input type="button" value="RateMyProfessor"/>								
Profile	Office	Comments	Profile	Office	Comments	Profile	Office	Comments	Profile	Office	Comments	Profile	Office	Comments

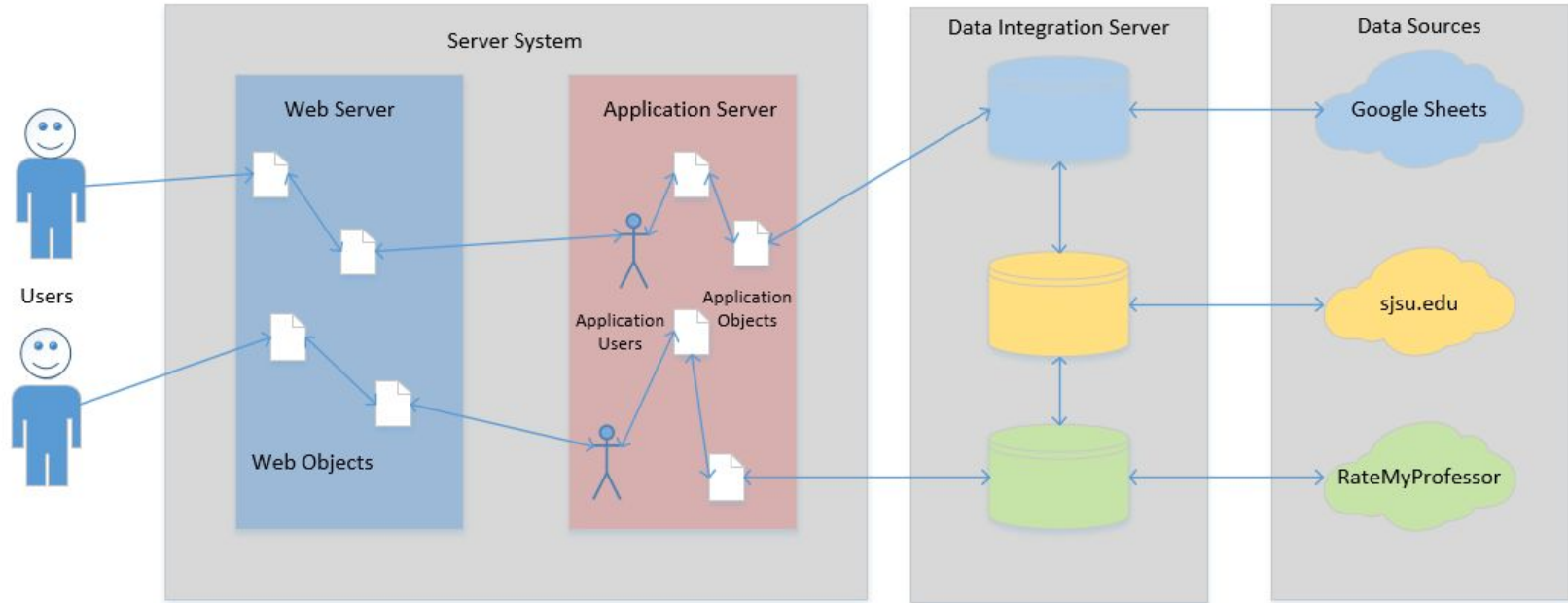
Spartan Compass [Assignments](#) [Calendar](#) [Notes](#) [Professors](#) [Course Planner](#) [Profile](#) [Log Out](#)

Course	Schedule	Title	Section	Code	Units	Type	Enrollment	Days	Time	Dates	Location	Instructor
CMPE 030	Fall 2017	Programming Concept & Meth	02	40610	0	LAB	0/30 spaces filled	R	1745 2035	08/23/17 12/11/17	ENG 405	
CMPE 030	Fall 2017	Programming Concept & Meth	08	50016	0	LAB	0/30 spaces filled	F	1000 1250	08/23/17 12/11/17	ENG 405	
CMPE 030	Fall 2017	Programming Concept & Meth	06	50014	3	LEC	0/60 spaces filled	TR	1630 1720	08/23/17 12/11/17	CL 310	
CMPE 030	Fall 2017	Programming Concept & Meth	07	50015	0	LAB	0/30 spaces filled	T	1730 2020	08/23/17 12/11/17	ENG 405	
CMPE 030	Fall 2017	Programming Concept & Meth	01	40609	3	LEC	0/60 spaces filled	TR	0800 0850	08/23/17 12/11/17	ENG 337	
CMPE 030	Fall 2017	Programming Concept & Meth	03	44281	0	LAB	0/30 spaces filled	W	1745 2035	08/23/17 12/11/17	ENG 405	
CMPE 050	Fall 2017	Object Orient Concept Meth	02	45904	0	LAB	0/30 spaces filled	T	1330 1620	08/23/17 12/11/17	ENG 489	
CMPE 050	Fall 2017	Object Orient Concept Meth	03	45905	0	LAB	0/30 spaces filled	R	1330 1620	08/23/17 12/11/17	ENG 489	
CMPE 050	Fall 2017	Object Orient Concept Meth	01	45886	3	LEC	0/90 spaces	TR	1630 1720	08/23/17 12/11/17	SCI 142	

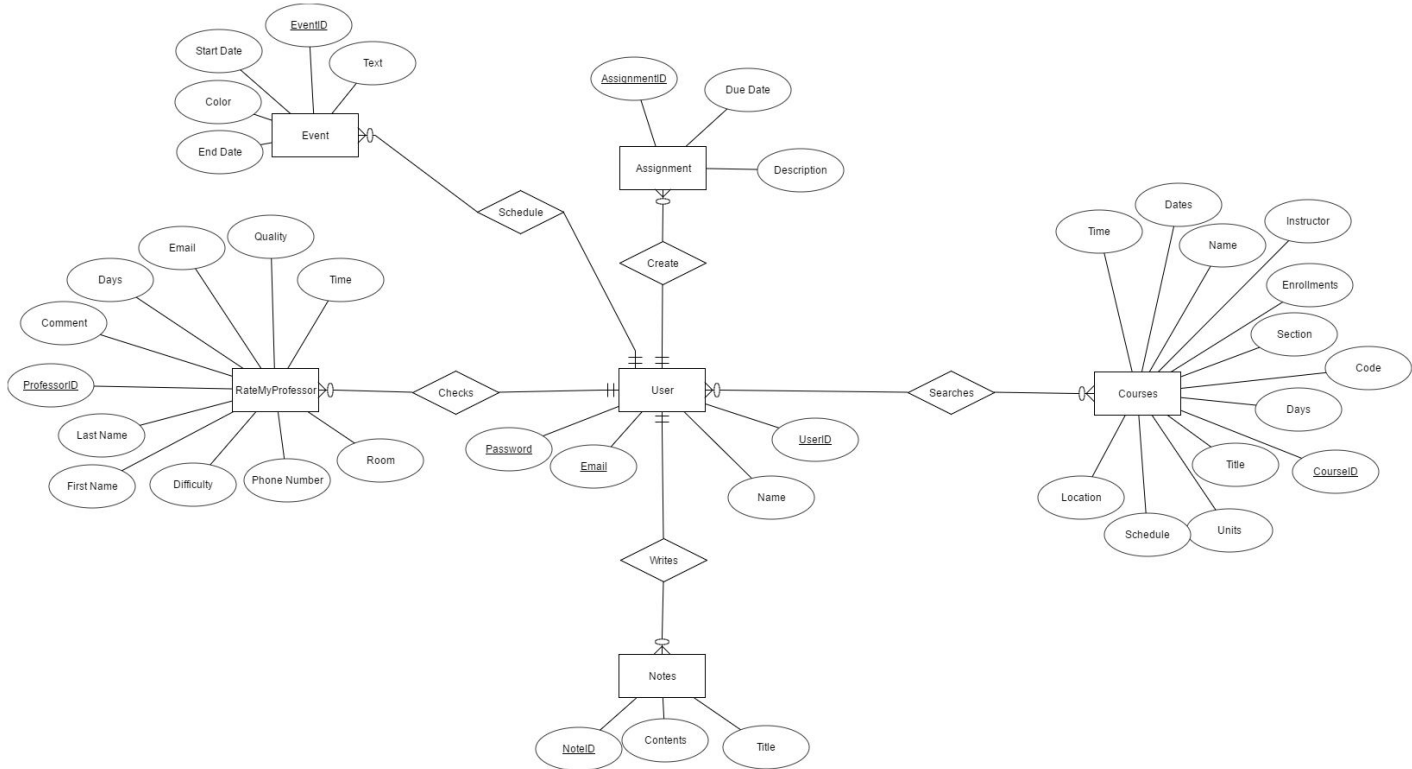
MVC Architecture



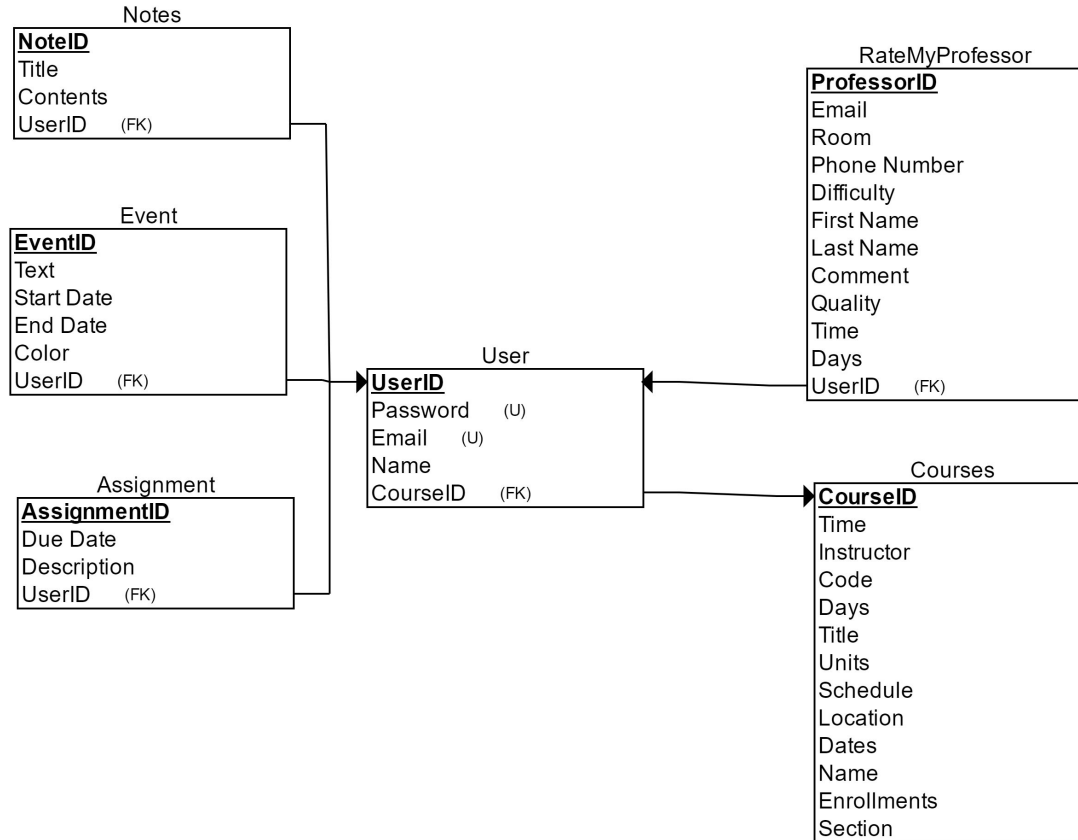
High Level Architecture Design



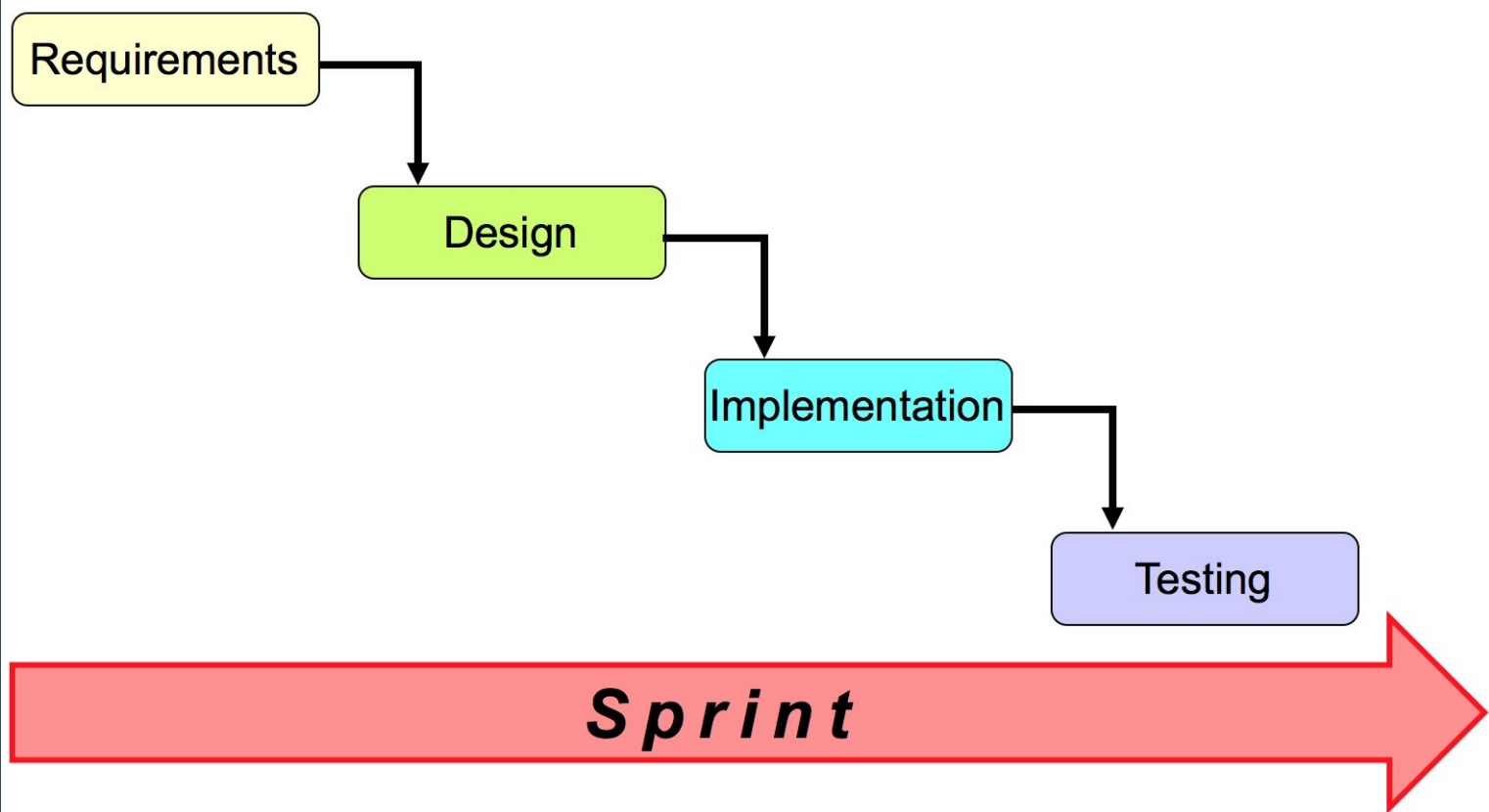
ER Diagram



Relational Schema



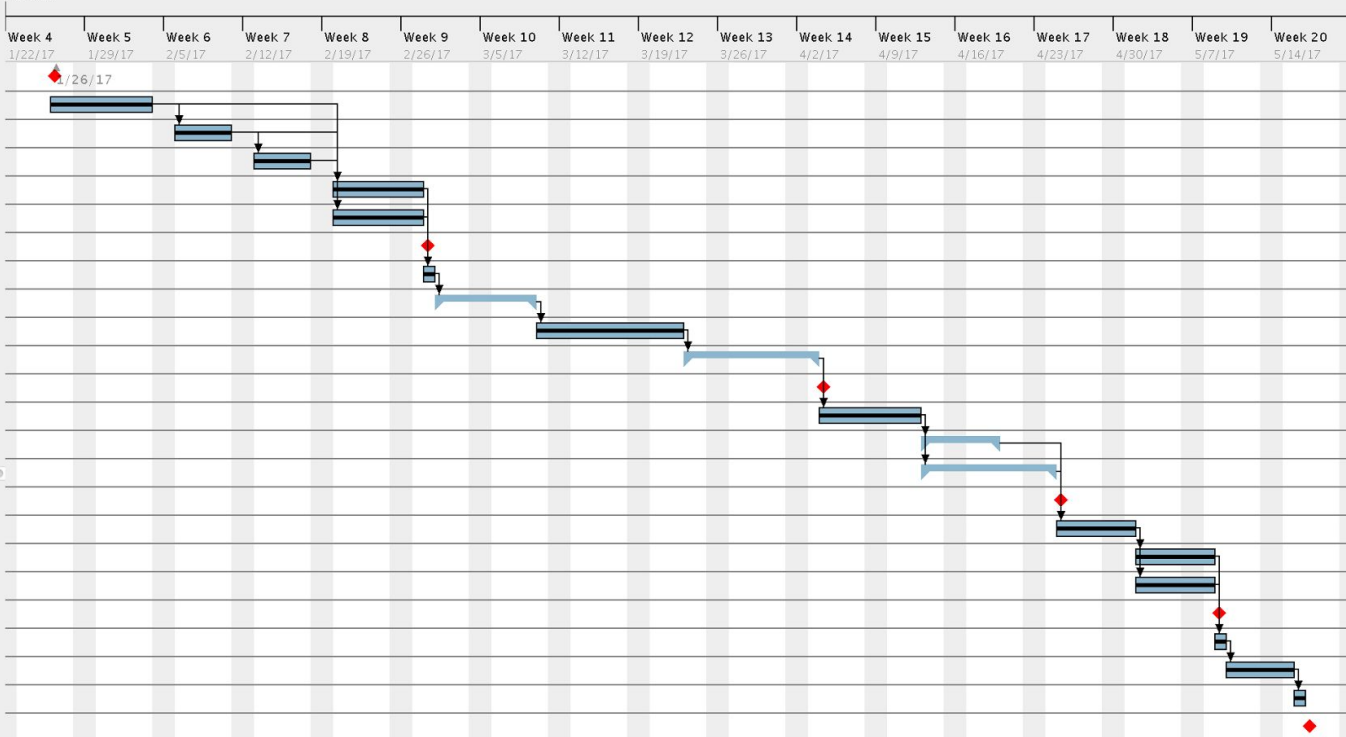
Agile Software Development



Schedule

Gantt project		
Name	Begin date	End date
• First Day of School	1/26/17	1/26/17
• Learn Ruby	1/26/17	2/3/17
• Learn MVC	2/6/17	2/10/17
• Learn Databases	2/13/17	2/17/17
• Brainstorm Project Ideas	2/20/17	2/27/17
• Brainstorm App Functions	2/20/17	2/27/17
• Conceptual Design Review	2/28/17	2/28/17
• Initialize Web App	2/28/17	2/28/17
► • Create Pages	3/1/17	3/9/17
• Debugging	3/10/17	3/22/17
► • Fix Bugs	3/23/17	4/3/17
• Design Reivew	4/4/17	4/4/17
• Web App Critique	4/4/17	4/12/17
► • Revisions	4/13/17	4/19/17
► • Additions	4/13/17	4/24/17
• Code Review	4/25/17	4/25/17
• Testing	4/25/17	5/1/17
• Fixing Bugs	5/2/17	5/8/17
• Additional App Functions	5/2/17	5/8/17
• Application Demo	5/9/17	5/9/17
• Presentation	5/9/17	5/9/17
• Implement Feedback Suggestions	5/10/17	5/15/17
• Finalize App	5/16/17	5/16/17
• Project Done	5/17/17	5/17/17

2017



Demo

Questions/Comments?